

Zenith



DATA SHEET

**AGM BATTERY
HIGH CRANKING RATE
ZPC120065**

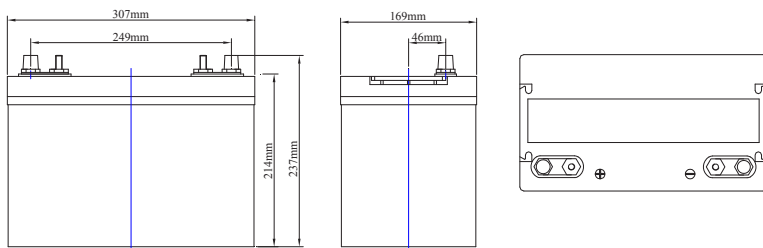
Performance features		
PHCA	1950A at 27°C (80°F)	5 seconds
CCA	950A at -18°C (0°F)	
HCA	1170A at 27°C (80°F)	
CA / MCA	1380A at 0°C (32°F)	
Self-Discharge 25°C (77°F)	Capacity after 3 month storage	91%
	Capacity after 6 month storage	82%
	Capacity after 12 month storage	64%
Standard Terminal	M8 + AP ADAPTOR	
Reserve Capacity	185Min	
Charging Cycle (constant voltage)	Charge 14.5V~14.9V/ 25°C (77°F)	
	Float 13.6V~13.8V/ 25°C (77°F)	
Short circuit current	3.500A	
Operation temperature range	-15°C (-5°F) to 50°C (122°F)	

Specifications		
Nominal Voltage		12V
Rated Capacity (20 hour rate)		100Ah
Dimension	Total Height (with terminals)	237mm (9.33 inches)
	Height	214mm (8.43 inches)
	Length	307mm (12.09 inches)
	Width	169mm (6.65 inches)
Weight		Approx. 32.2kg (70.99lbs)

High rate discharge at 25°C (77°F)			
5 sec	10 sec	20 sec	30 sec
1950A	1745A	1500A	1355A

Extended discharge at 25°C (77°F) to 10,02V						
5 min.	15 min.	1h	3h	5h	10h	20h
382A	188A	60A	25.1A	17.2A	9.65A	5.15A

PHYSICAL CHARACTERISTICS

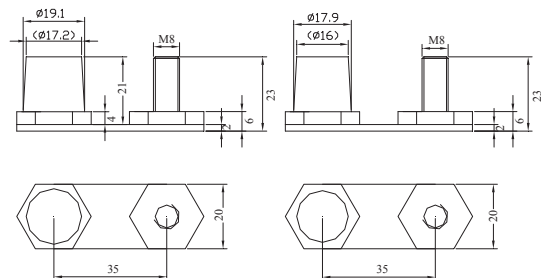


Terminal Type: DT

Unit:mm

Positive

Negative



This information is generally descriptive only and is not intended to make or imply any representation, guarantee or warranty with respect to any cells and batteries. Cell and battery designs/specification are subject to modification without notice. Contact U.B.S. UNION BATTERY SERVICE for the latest information.

www.zenithdcbattery.com

DIVISION OF



www.unionbatteryservice.it