

Zenith



DATA SHEET

AGM BATTERY
HIGH CRANKING RATE

ZPC120051

Performance features

PHCA	1500A at 27°C (80°F)	5 seconds
CCA	825A at -18°C (0°F)	
HCA	1200A at 27°C (80°F)	
CA / MCA	1000A at 0°C (32°F)	
Self-Discharge 25°C (77°F)	Capacity after 3 month storage Capacity after 6 month storage Capacity after 12 month storage	91% 82% 64%
Standard Terminal	M8 + AP ADAPTOR	
Reserve Capacity	135Min	
Charging Cycle (constant voltage)	Charge 14.5V~14.9V/ 25°C (77°F) Float 13.6V~13.8V/ 25°C (77°F)	
Short circuit current	2.200A	
Operation temperature range	-15°C (-5°F) to 50°C (122°F)	

Specifications

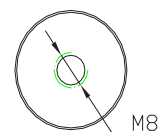
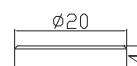
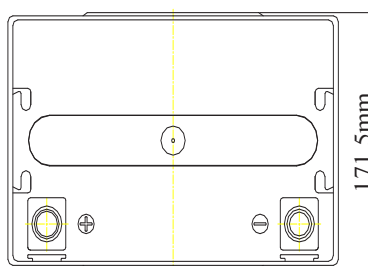
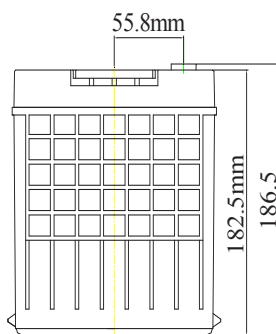
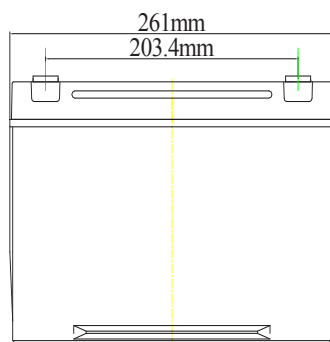
Nominal Voltage		12V
Rated Capacity (20 hour rate)		65Ah
Dimension	Total Height (with terminals)	186.5mm (7.34 inches)
	Height	182.5mm (7.19 inches)
	Length	261mm (10.28 inches)
	Width	171.5mm (6.75 inches)
Weight		Approx. 20.85kg (45.86lbs)

High rate discharge at 25°C (77°F)

5 sec	10 sec	15 sec	20 sec
1500A	1280A	1170A	1100A

Extended discharge at 25°C (77°F) to 10,02V

5 min.	15 min.	1h	3h	5h	10h	20h
305A	145A	47A	18A	11A	6.2A	3.4A



This information is generally descriptive only and is not intended to make or imply any representation, guarantee or warranty with respect to any cells and batteries. Cell and battery designs/specification are subject to modification without notice. Contact U.B.S. UNION BATTERY SERVICE for the latest information.

www.zenithdcbattery.com

DIVISION OF


www.unionbatteryservice.it