

Zenith



DATA SHEET

AGM BATTERY HIGH CRANKING RATE ZPC120020

Performance features

PHCA	680A at 27°C (80°F)	5 seconds
CCA	230A at -18°C (0°F)	
HCA	410A at 27°C (80°F)	
CA / MCA	310A at 0°C (32°F)	
Self-Discharge 25°C (77°F)	Capacity after 3 month storage	91%
	Capacity after 6 month storage	82%
	Capacity after 12 month storage	64%
Standard Terminal	M6	
Reserve Capacity	28Min	
Charging Cycle (constant voltage)	Charge 14.5V~14.9V/ 25°C (77°F)	
	Float 13.6V~13.8V/ 25°C (77°F)	
Short circuit current	800A	
Operation temperature range	-15°C (-5°F) to 50°C (122°F)	

Specifications

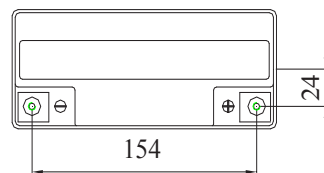
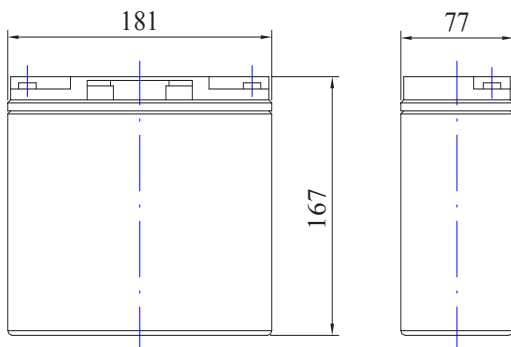
Nominal Voltage		12V
Rated Capacity (20 hour rate)		20Ah
Dimension	Total Height (with terminals)	167mm (6.57 inches)
	Height	167mm (6.57 inches)
	Length	181mm (7.13 inches)
	Width	77mm (3.03 inches)
Weight		Approx. 7.0 kg (15.4lbs)

High rate discharge at 25°C (77°F)

5 sec	10 sec	20 sec	30 sec
680A	595A	515A	400A

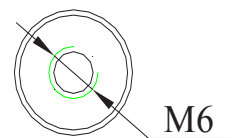
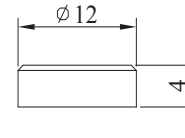
Extended discharge at 25°C (77°F) to 10,02V

5 min.	15 min.	1h	3h	5h	10h	20h
82A	38A	13.2A	5.1A	3.4A	1.9A	1A



Terminal Type:M6

unit:mm



This information is generally descriptive only and is not intended to make or imply any representation, guarantee or warranty with respect to any cells and batteries. Cell and battery designs/specification are subject to modification without notice. Contact U.B.S. UNION BATTERY SERVICE for the latest information.

www.zenithdcbattery.com

DIVISION OF


www.unionbatteryservice.it